



# Certificate of Analysis

Order# 1171

Sample# 9350

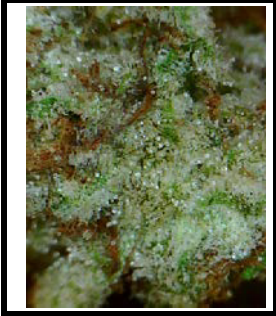
Sample Received: 01/07/2026

Report Created: 01/12/2026

Batch/Lot# 304-GC

## Frosted Guava

Flower, Fresh, Hemp Cannabis



### Summary

#### Test

Potency  
Microbiological (Quantitative)  
Homogenization

#### Date Tested

1/9/2026

Not Tested

1/9/2026

#### Result

Tested

N/A

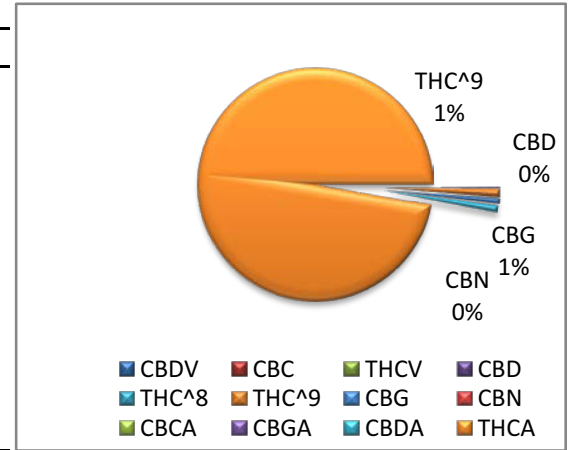
Tested

## Cannabinoids (ECL-LC-201)

This test method has been validated and performed according to the principles and measurements of ISO 17025:2015.

19.6714 % Total THC	0.2052 % Total CBD
------------------------	-----------------------

Ratio of Cannabinoids



Analyte	LOQ (%)	Mass (%)	Mass (mg/g)
CBDV	0.08%	0.00%	0.00 mg/g
CBC	0.08%	0.00%	0.00 mg/g
THC-V	0.08%	0.00%	0.00 mg/g
CBD	0.08%	0.03%	0.25 mg/g
THC <sup>8</sup>	0.08%	0.00%	0.00 mg/g
THC <sup>9</sup>	0.08%	0.24%	2.38 mg/g
CBG	0.08%	0.16%	1.63 mg/g
CBN	0.08%	0.00%	0.00 mg/g
CBCA	0.08%	0.00%	0.00 mg/g
CBGA	0.08%	0.00%	0.00 mg/g
CBDA	0.08%	0.21%	2.05 mg/g
THCA	0.08%	22.16%	221.59 mg/g
<b>Total</b>		<b>22.79%</b>	<b>227.90 mg/g</b>

Unit Weight (grams) = 0.1

Total THC = THCa \* 0.877 + ^9-THC      Total CBD = CBDa \* 0.877 + CBD

LOQ = Limit of Quantitation; The reported result is based upon sample weight; unless otherwise stated all quality control samples performed within specifications established by the laboratory in accordance with Texas state law.

Measurement of Uncertainty (MOU) for ^9-THC is calculated to be +/- 0.05%

404 N Whitt Street, Unit 2  
Oakwood, TX 75855  
817-357-6582  
[www.ecltesting.com](http://www.ecltesting.com)

*Matthew O. Madison*  
Matthew Madison  
President

ND = Not Detected; NR = Not Reported

This product has been tested by ECL Testing, LLC using valid testing methodologies and a quality system as required by state law. Values reported relate only to the product tested. ECL Testing, LLC makes no claims as to the efficacy, safety or other risks associated with any detected or non-detected levels of any compounds reported herein. This Certificate shall not be reproduced except in full, without the written approval of ECL Testing, LLC.